

Caution:

Always handle **Surgicoll-Mesh** using aseptic techniques. **Surgicoll-Mesh** may form a caramel-colored gel, which can be rinsed away with gentle sterile irrigation. **Surgicoll-Mesh** should not be applied until excessive exudate, bleeding, acute swelling, and infection is controlled.

Contra-indications:

Surgicoll-Mesh is derived from a bovine or ovine source and should not be used in patients with known sensitivity to such materials.

Precautions:

Do not resterilize. Discard all open and unused portions of **Surgicoll-Mesh**. **Surgicoll-Mesh** is sterile if the package is dry, unopened and undamaged. Do not use if the package seal is broken. The device must be used prior to the expiration date. **Surgicoll-Mesh** is available by medical prescription only.

Storage:

Surgicoll-Mesh should be kept in a clean, dry location. It can be stored at ambient room temperature and it is risk-free between -18°C to 40°C or 0°F to 104°F.

Sterilization:

Surgicoll-Mesh has been sterilized with ethylene oxide. (Each individually sterilized).

Shelf Life: **Surgicoll-Mesh** Shelf life is 3 years.

Available Sizes (in cms):

5x5	2x25	5x10	10x10	10x15	10x20	15x15
10x25	15x20	20x20	15x30	20x25	20x30	

Mfg. Lic. Number : 675

Manufactured & Marketed by:



Advanced Biotech Products (P) Ltd.

New 17, Old 77, First Cross Street,
Ragavan Colony, Chennai - 600083, India.

Under the Technology from :



Phone: 044-24744650

Email: info@abpdermal.com

8005-01.F

Phone: 044-24891659

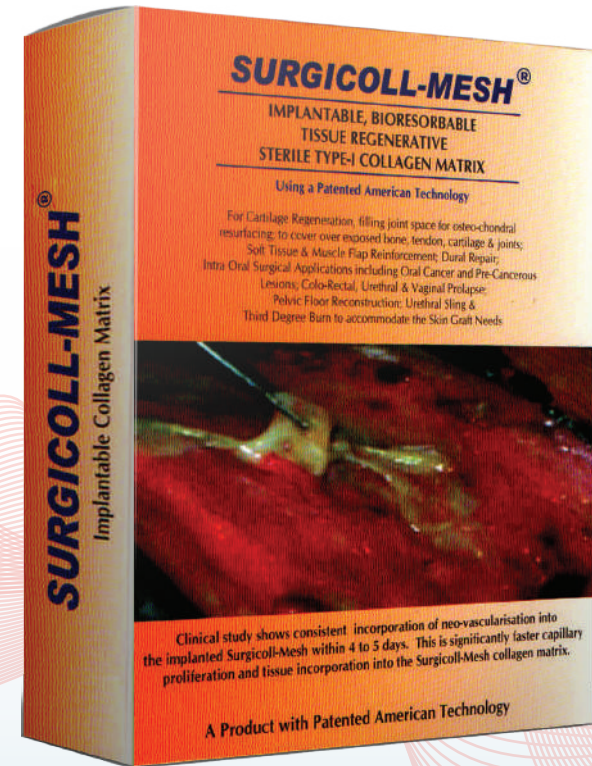
Website: www.abpdermal.com

SURGICOLL-MESH®

IMPLANTABLE, BIORESORBABLE TISSUE REGENERATIVE STERILE TYPE-I COLLAGEN MATRIX

A Product with Patented American Technology

For Cartilage Regeneration, Soft Tissue & Muscle Flap Reinforcement, Dural Repair, Intra Oral Surgical Applications including Oral Cancer and Pre-Cancerous Lesions, Colo-Rectal, Urethral & Vaginal Prolapse, Pelvic Floor Reconstruction, Urethral Sling & Third Degree Burn to Accommodate the Skin Graft Needs.



Advanced Patented High Purity Type-I Collagen Matrix



Advanced Biotech Products (P) Ltd

www.abpdermal.com

info@abpdermal.com

SURGICOLL-MESH[®]

Surgicoll-Mesh is a biocompatible collagen mesh that is flexible, strong yet soft. The collagen membrane is also supple when hydrated and handles like natural tissue. It readily conforms to the surgical site upon application and is easily sutured. **Surgicoll-Mesh** is constituted by Type-I collagen membrane that is free of contaminants like lipids, elastin and other immunogenic proteins. The collagen used in the **Surgicoll-Mesh** product is based on a patented technology that ensures the high purity Type-I collagen. It is processed under patented conditions and with stringent USP quality tests as per WHO (World Health Organization) and other international standards.

INDICATIONS:

- Soft Tissue & Muscle Flap Reinforcement - As a patch to reinforce soft tissues repaired by suture or suture anchors, suture line reinforcement, muscle supplement with sling, repair and anchorage of tendon damage, and Transverse Rectus Abdominis Muscle (TRAM) flap procedures.
- Cartilage Regeneration.
- Hernia repair including abdominal, inguinal, femoral, diaphragmatic, scrotal, umbilical, and incisional hernias.
- Neurosurgical - As a substitute for dura repair and nerve wrap.
- Orthopedic Surgery - Osteochondral resurfacing, synovial tissue implant, repair of rotator cuff, patellar, Achilles, biceps, quadriceps and other tendons.
- Cardio-vascular - Cardiac patch (atrial & ventricular), Intra-cardiac & arterial patch, for suture-line buttress, thoracic wall repair patch, etc.
- Intra Oral Surgical - Post-operative mucosal defect in oral cancer and pre-cancerous lesions, dental/OMF applications.
- Diabetic ulcer treatment.
- Colo-rectal, urethral & vaginal prolapse.
- Pelvic floor reconstruction, sacro-colposuspension and urethral sling.
- Third-Degree Burn to accommodate the Skin Graft needs

ADVANTAGES OF SURGICOLL-MESH:

Surgicoll-Mesh offers clear advantages over synthetic and other collagen products for soft tissue repair and reconstructive applications. The product's biochemistry and microporosity facilitate rapid cell penetration and revascularization. Ultimately, **Surgicoll-Mesh** acts as a scaffold that can be naturally and progressively integrated, remodeled and eventually replaced by functional host tissue. **Surgicoll-Mesh** uses a patented process to purify the Type-I collagen and make it into a membrane with the biological properties and structure of native collagen.

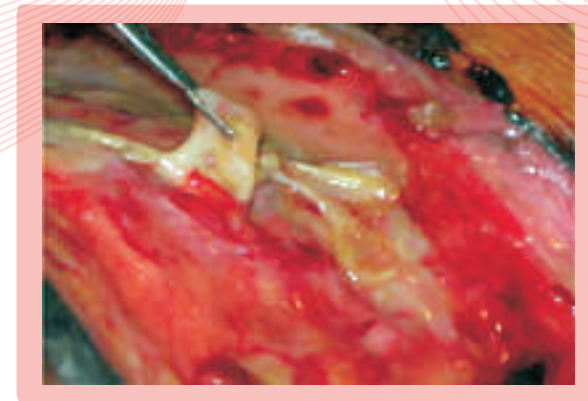
DIRECTIONS FOR USE:

Unpacking the Sterile **Surgicoll-Mesh** Product



Note: **Surgicoll-Mesh** comes in a sterile double packaging as a transparent pliable sheet with a back and a top protection cover sheet of medical grade synthetic polymer.

- Upon opening the sterile package, carefully remove the top sheet of polymer and soak the **Surgicoll-Mesh** membrane in sterile saline solution for 5 to 10 minutes to easily remove the other backing sheet, (soaking time is not critical for the efficacy of the product).
- Prepare the area using standard methods to ensure it is free of blood clot, debris and necrotic tissues.
- Do not apply ointment or any greasy cream on the site prior to **Surgicoll-Mesh**.
- Slightly stretch the membrane for better adherence to the surface.
- Do not try to over-stretch the membrane.



Collagen consistently incorporated by neo-vascularization by day 4-5.
Capillary Structure and new tissue incorporates
into Surgicoll-Mesh eventually.